



Slight deviations in colour due to printing process.



flammstop

drapilux

drapilux of scandinavia | Gerlev - DK 4200 Slagelse

T +45 58 57 04 00

| M pagunette@pagunette.com

NORGE: T +47 22 09 31 50

| M mn@pagunette.dk

SVERIGE SYD: T +46 70 526 14 85

| M ia@pagunette.dk

SVERIGE MELLAN: +46 705188040

| M br@pagunette.dk

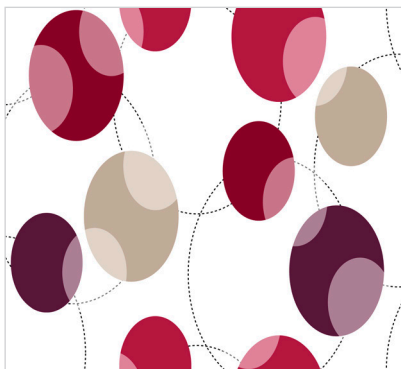
SVERIGE NORR: +358 440554574

| M hr@pagunette.dk

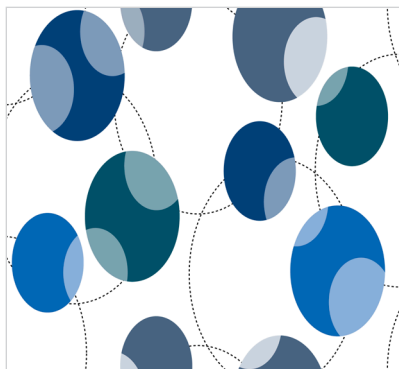
www.pagunette.com | www.drapilux.com

drapilux

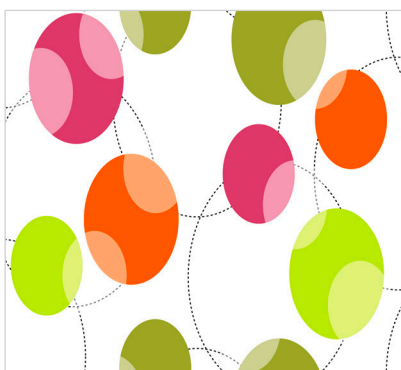
d 465 egg



d 465 04



d 465 06



d 465 01



d 465 08

Technical Data:

DIN 4102 B1
M1 Non Feu (B+F+E)
Classe 1 (I)
BS 5867 (GB)
EN 13 773 Classe 1
IMO Res. A.471 (XII)

Martindale abt. 40.000 T.
DIN EN ISO 12947-2

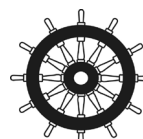
Material:

100% Trevira CS
↔ abt. 140 cm
abt. 150 g/m²

Repeat:

abt. 62 cm

Pilling abt. grade 2-3
DIN EN ISO 12945-2



0736

Öko-Tex Standard 100
ACB . Prüf-Nr. A96-0071
FI Hohenstein

drapilux

eine Marke der Schmitz-Werke
a brand of Schmitz-Werke
une marque de la société Schmitz-Werke
una marca di Schmitz-Werke

drapilux